



VIDEO BORESCOPE



JK

JF

CT

PHD

CK

CF

Borescope | HD Borescope | 3D Measurement Borescope
360° Articulation Probe | 2Way Probe | Pipe Probe
Dual Camera Probe | IR Probe | UV Probe

www.ome-top.com.tw

7"

Touch

7" LCD

PIPE

USB

JK Series

7" HD LCD Monitor

- Snapshot & Video Recording
- LED Brightness Adjustment
- Mirror Image & Image Rotation
- 5X Zoom In (1.5X / 2.0X / 5.0X)
- USB to PC Conneciotn
- Long Duty Hour Up To 6 Hrs
- Display Dust/Water Protection IP55
- 1 Meter Drop Test
- Made in Taiwan. High Durability
- Ship Worldwide



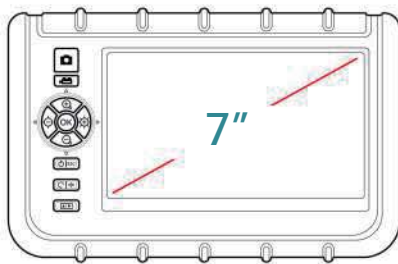
< Back View >

< Side View >



7" IPS Touch Panel

ISP LCD candle screen with capacitive touch technology for optimum performance



Display Dust/Water Protection IP55

1 meter drop test



USB to PC Conneciotn

Live view software to PC

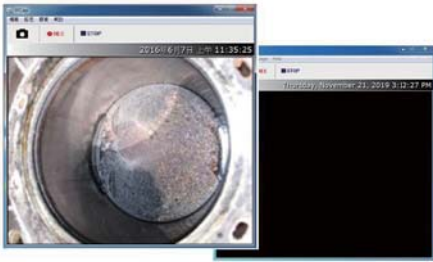


Video Output

Recorded video & images can be displayed directly to a TV screen for large screen viewing. Support "PAL" / "NTSC" video system.

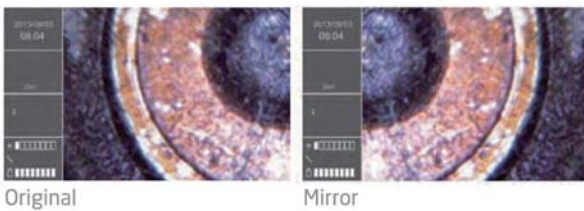
Live View Software

Live view software with snapshot, video recording and playback function.



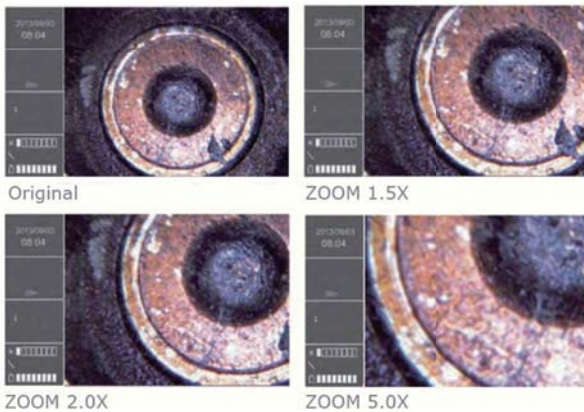
Mirror Image

Support mirror image to correct the direction of probe.



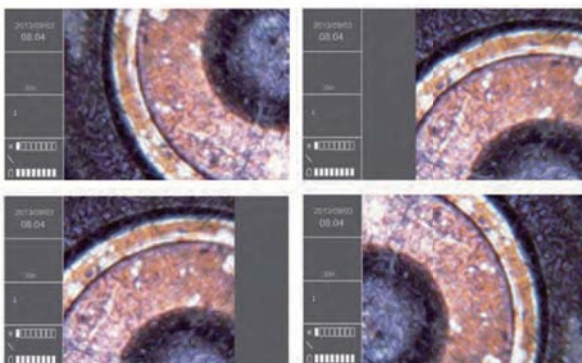
Three Stages 5.0X Zoom - In

Support 1.5X, 2.0X, 5.0X digital zoom.



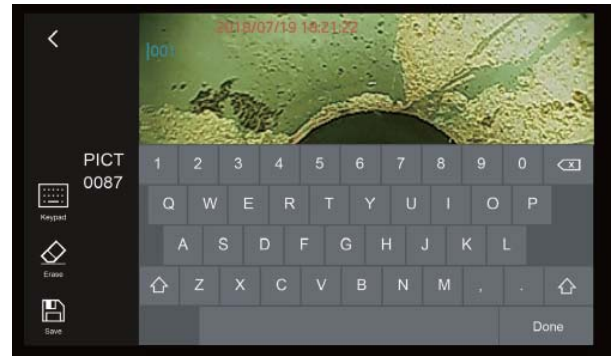
Screen Image Rotation Ability

Features image rotation allowing user to turn image into four directions 90°, 180°, 270° and 360°. No need to rotate camera probe anymore.



Dual View Mirror

Requires accessories 6.0mm articulation exclusive use mirror. To see front view and side view simultaneously.



Specification

Host	
Screen	7" TFT LCD (800 x 480)
Image Storage Format	640 * 480, JPEG
Video Recording Format	640 * 480, MPGE4 (with audio)
Storage	16 GB SD card (up to 32 GB)
USB	Live View mode (Webcam)
Interface	Mass storage mode USB 2.0 / AV out
Audio Input	Built-in microphone
Brightness Adjust	10 levels
Waterproof	IP57 standard
Droptest	1Meter test
Working Temperature	-10°C ~ 60°C
Storage Temperature	-20°C ~ 80°C
Languages	27 Languages English / French / German / Italian / Spanish / Danish / Russian / Portuguese / Japanese / Dutch / Traditional Chinese / Hungarian Simplified Chinese / Romanian / Bulgarian / Turkish / Swedish / Norwegian / Estonian / Lithuanian / Latvian / Polish / Czech / Slovak / Slovenian / Italian / Greek / Finnish
Battery	Built-in Li-polymer Battery 6 hrs capacity / 3 hrs charge to full
Dimension	240 x 154 x 47 mm
Weight	1.18 kg (2.6 lb)



Model

JKR = Semi-Rigid / JKS = Soft-Metal / JKS-5501 = Ø5.5mm / JKS-5501 = 1M / JKS-4901S = Dual Cameras

JKVS = VGA Tube / JKVS-60012 = 2Way Articulation / JKVS-60014 = 360° Articulation / JKS-2830M = Meter

Model	Features	Resolution	Tip Dia.	Length	Material of Tube
JKR-3901		320 x 240	Φ3.9mm	1 M	Semi-Rigid
JKR-3902		320 x 240	Φ3.9mm	2 M	Semi-Rigid
JKR-3903		320 x 240	Φ3.9mm	3 M	Semi-Rigid
JKR-5501		320 x 240	Φ5.5mm	1 M	Semi-Rigid
JKR-5502		320 x 240	Φ5.5mm	2 M	Semi-Rigid
JKR-5503		320 x 240	Φ5.5mm	3 M	Semi-Rigid
JKR-8501		320 x 240	Φ8.5mm	1 M	Semi-Rigid
JKR-8502		320 x 240	Φ8.5mm	2 M	Semi-Rigid
JKR-8503		320 x 240	Φ8.5mm	3 M	Semi-Rigid
JKS-5501		320 x 240	Φ5.5mm	1 M	Soft-Metal
JKS-5502		320 x 240	Φ5.5mm	2 M	Soft-Metal
JKS-5503		320 x 240	Φ5.5mm	3 M	Soft-Metal
JKS-5505		320 x 240	Φ5.5mm	5 M	Soft-Metal
JKS-5510		320 x 240	Φ5.5mm	10 M	Soft-Metal
JKS-5520		320 x 240	Φ5.5mm	20 M	Soft-Metal
JKS-5530		320 x 240	Φ5.5mm	30 M	Soft-Metal
JKR-4901S	Dual Cameras	320 x 240	Φ4.9mm	1 M	Semi-Rigid
JKR-4902S	Dual Cameras	320 x 240	Φ4.9mm	2 M	Semi-Rigid
JKR-4903S	Dual Cameras	320 x 240	Φ4.9mm	3 M	Semi-Rigid
JKVS-5501		640 x 480	Φ5.5mm	1 M	Soft-Metal
JKVS-5502		640 x 480	Φ5.5mm	2 M	Soft-Metal
JKVS-5503		640 x 480	Φ5.5mm	3 M	Soft-Metal
JKVS-5505		640 x 480	Φ5.5mm	5 M	Soft-Metal
JKVR-5501		640 x 480	Φ5.5mm	1 M	Semi-Rigid
JKVR-5503		640 x 480	Φ5.5mm	3 M	Semi-Rigid
JKVS-5401	Cast Inspection	640 x 480	Φ5.4mm	1 M	Spring Stainless Steel
JKVS-45022	Short-Tip 2Way	640 x 480	Φ4.5mm	1.5 M	Braided Stainless Steel
JKVS-45032	Short-Tip 2Way	640 x 480	Φ4.5mm	3 M	Braided Stainless Steel
JKVS-60011	1Way Articulation	640 x 480	Φ6.0mm	1 M	Braided Stainless Steel
JKVS-60012	2Way Articulation	640 x 480	Φ6.0mm	1 M	Soft-Metal
JKVS-60022	2Way Articulation	640 x 480	Φ6.0mm	2 M	Soft-Metal
JKVS-60032	2Way Articulation	640 x 480	Φ6.0mm	3 M	Soft-Metal
JKVS-60014	360°Articulation	640 x 480	Φ6.0mm	1 M	Braided Stainless Steel
JKVS-60034	360°Articulation	640 x 480	Φ6.0mm	3 M	Braided Stainless Steel
JKVS-60054	360°Articulation	640 x 480	Φ6.0mm	5 M	Braided Stainless Steel
JKVS-60074	360°Articulation	640 x 480	Φ6.0mm	7 M	Braided Stainless Steel
JKS-2810	Pipe Inspection	640 x 480	Φ28.0mm	10 M	Hard Soft-Metal
JKS-2830M	Pipe Inspection	640 x 480	Φ28.0mm	30 M	Hard Soft-Metal

3.5"

LCD

3.5"
LCD

PIPE

USB

JF Series

3.5" TFT LCD Monitor

- Records VGA Resolution (640x480 Pixel)
- 2X Larger Images and Horizontal Mirror For Code Identification
- Rechargeable Internal Li-Polymer Battery Lasts For 4 Hours
- Made in Taiwan. High Durability

3.5" TFT LCD Monitor

3.5" high-resolution ultra-wide-angle LCD screen, using oil-resistant scratch-resistant tempered glass panel



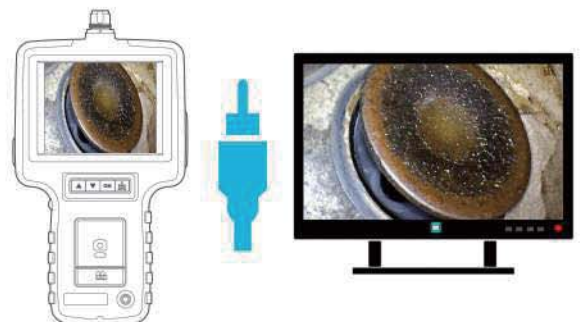
USB Connection

JF Series is capable to transfer captured images and view form PC. Support Windows 2000 or later version. No specific software is required to palyback the JPG and ASF files.



Video Output

Recorded video & images can be displayed directly to a TV screen for large screen viewing. Support PAL / NTSC video system.



2.0X Zoom - In

Support up to 2X digital zoom.



Original



ZOOM 2.0X

Mirror Image

Support mirror image function on display.



Specification

Host	
Display	3.5" TFT LCD (320 x 240)
Image Resolution	JPEG (640 x 480)
Video Resolution	AVI (640 x 480)
storage method	8G SD card (up to 32G)
Data Port	USB 2.0 / AV Out
Illuminance	10 + 2 levels
Working Temperature	0°C ~ 60°C
Storage Temperature	0°C ~ 60°C
Language	English / French / German / Italian / Spanish / Portuguese / Japanese / Traditional Chinese / Simplified Chinese / Danish / Dutch / Polish / Russian / Bulgarian / Turkish / Swedish / Finnish / Norwegian / Estonian / Lithuanian / Latvian / Hungarian / Czech / Slovak / Slovenian / Romanian / Greek
Battery Capacity	Built-in Li-polymer Battery, Capacity: 4 hrs, Charge time: 2 hrs
Dimension	117.5 x 207 x 37 (mm)
Weight	0.395 kg (0.87 lb)



Model

JFR = Semi-Rigid / JFS = Soft-Metal / JFS-5501 = Ø5.5mm / JFS-5501 = 1M / JFS-4901S = Dual Cameras

JFVS = VGA Tube / JFVS-60012 = 2Way Articulation / JFVS-60014 = 360° Articulation / JFS-2830M = Meter

Model	Features	Resolution	Tip Dia.	Length	Material of Tube
JFR-3901		320 x 240	Φ 3.9mm	1 M	Semi-Rigid
JFR-3902		320 x 240	Φ 3.9mm	2 M	Semi-Rigid
JFR-3903		320 x 240	Φ 3.9mm	3 M	Semi-Rigid
JFR-5501		320 x 240	Φ 5.5mm	1 M	Semi-Rigid
JFR-5502		320 x 240	Φ 5.5mm	2 M	Semi-Rigid
JFR-5503		320 x 240	Φ 5.5mm	3 M	Semi-Rigid
JFR-8501		320 x 240	Φ 8.5mm	1 M	Semi-Rigid
JFR-8502		320 x 240	Φ 8.5mm	2 M	Semi-Rigid
JFR-8503		320 x 240	Φ 8.5mm	3 M	Semi-Rigid
JFS-5501		320 x 240	Φ 5.5mm	1 M	Soft-Metal
JFS-5502		320 x 240	Φ 5.5mm	2 M	Soft-Metal
JFS-5503		320 x 240	Φ 5.5mm	3 M	Soft-Metal
JFS-5505		320 x 240	Φ 5.5mm	5 M	Soft-Metal
JFS-5510		320 x 240	Φ 5.5mm	10 M	Soft-Metal
JFS-5520		320 x 240	Φ 5.5mm	20 M	Soft-Metal
JFS-5530		320 x 240	Φ 5.5mm	30 M	Soft-Metal
JFR-4901S	Dual Cameras	320 x 240	Φ 4.9mm	1 M	Semi-Rigid
JFR-4902S	Dual Cameras	320 x 240	Φ 4.9mm	2 M	Semi-Rigid
JFR-4903S	Dual Cameras	320 x 240	Φ 4.9mm	3 M	Semi-Rigid
JFVS-5501		640 x 480	Φ 5.5mm	1 M	Soft-Metal
JFVS-5502		640 x 480	Φ 5.5mm	2 M	Soft-Metal
JFVS-5503		640 x 480	Φ 5.5mm	3 M	Soft-Metal
JFVS-5505		640 x 480	Φ 5.5mm	5 M	Soft-Metal
JFVR-5501		640 x 480	Φ 5.5mm	1 M	Semi-Rigid
JFVR-5503		640 x 480	Φ 5.5mm	3 M	Semi-Rigid
JFVS-5401	Cast Inspection	640 x 480	Φ 5.4mm	1 M	Spring Stainless Steel
JFVS-45022	Short-Tip 2Way	640 x 480	Φ 4.5mm	1.5 M	Braided Stainless Steel
JFVS-45032	Short-Tip 2Way	640 x 480	Φ 4.5mm	3 M	Braided Stainless Steel
JFVS-60011	1Way Articulation	640 x 480	Φ 6.0mm	1 M	Braided Stainless Steel
JFVS-60012	2Way Articulation	640 x 480	Φ 6.0mm	1 M	Soft-Metal
JFVS-60022	2Way Articulation	640 x 480	Φ 6.0mm	2 M	Soft-Metal
JFVS-60032	2Way Articulation	640 x 480	Φ 6.0mm	3 M	Soft-Metal
JFVS-60014	360°Articulation	640 x 480	Φ 6.0mm	1 M	Braided Stainless Steel
JFVS-60034	360°Articulation	640 x 480	Φ 6.0mm	3 M	Braided Stainless Steel
JFVS-60054	360°Articulation	640 x 480	Φ 6.0mm	5 M	Braided Stainless Steel
JFVS-60074	360°Articulation	640 x 480	Φ 6.0mm	7 M	Braided Stainless Steel
JGS-2810	Pipe Inspection	640 x 480	Φ 28.0mm	10 M	Hard Soft-Metal
JGS-2830M	Pipe Inspection	640 x 480	Φ 28.0mm	30 M	Hard Soft-Metal



CT Series

5.1" HD IPS LCD Monitor

- High-End Borescope Competitive with GE & Olympus
- Wear-resistant Tungsten Braided Probe
- 360° Full Swing Articulation Probe. Max 190° On Each Side.
- 720P HD Camera 1280 x 720 Resolution.
- Snapshot & Video Recording
- Super Bright 50000 Lux LED Brightness Adjustment
- Detachable Probe & Display

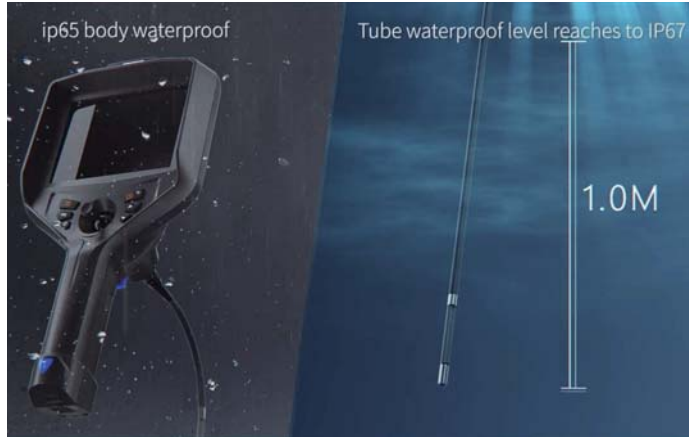
5.1" IPS Monitor

1280 x 960 HD

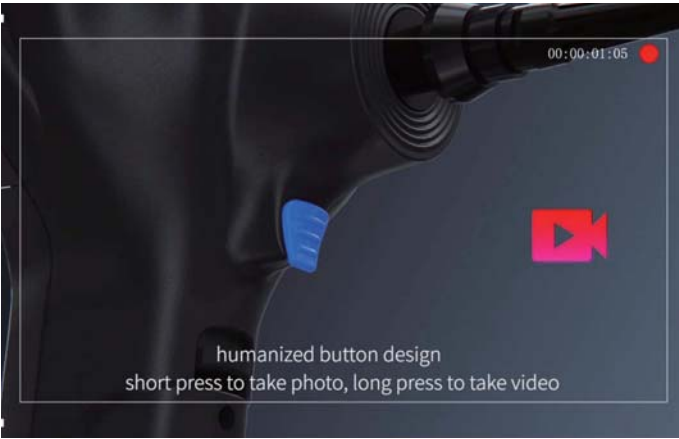


Water Proof Design

Doby IP65 / Tube IP67



One Click Photo & Video



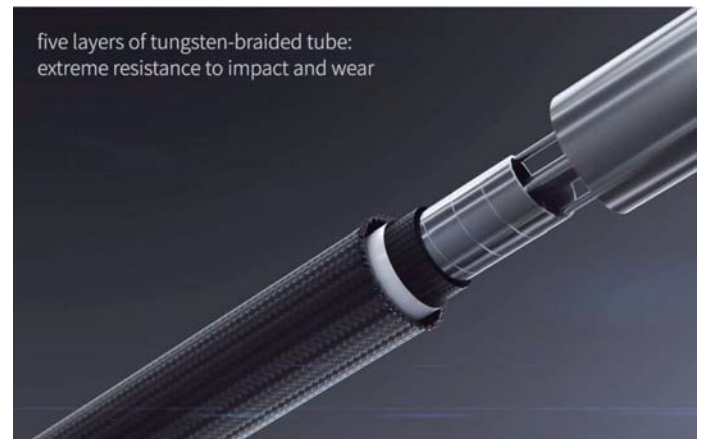
Sensitive 360 Degree Joystick



Dual 18650 Lithium-ion Batteries Design



Five Layers of Tungsten-Braided Probe



High Quality Camera Lens



Different Diameter of Probe for Option



Specification

Host						
Probe Diameter	1.8mm	2.2mm	2.8mm	3.9mm	6.0mm	8.0mm
Viewing Direction	0° front view (90° side camera / dual-view camera for option)					
Display	5.1" color IPS display. All sight viewing angle, sunshade design (1280x960)					
Image Resolution	400x400	640x480		1280x720		
Video Resolution	400x400	640x480		1280x720		
Data Port	HDMI video output, Micro USB port with water & dustproof device					
Articulation	2-WAY Articulation		360° Joystick-control Articulation			
Illuminance	1~9 levels adjustable light					
Working Temperature	Display: 30°C~60°C, when 0° C below · Camera: -25°C~80°C, when 0° C below					
Storage Temperature	-23°C~63°C					
Language	English / French / German / Spanish / Japanese / Traditional Chinese / Simplified Chinese / Russian / Korean / Polish / Italian					
Battery Capacity	3.7V, 3200mAh × 2 (Detachable 18650 lithium-ion rechargeable type)					
Size	324.3x161.3x91.2mm					
Weight	0.8Kg (Include batteries)					
Portable Case	ABS airtight shock-proof portable case, size: 46x40x19cm(Standard Series)					



Model

Model	Tip Dia.	Length	Articulation	Camera Resolution
CT5-18012	Ø1.8	1M	2Way	400 x 400
CT5-22012	Ø2.2	1M	2Way	640 x 480
CT5-22022	Ø2.2	2M	2Way	640 x 480
CT5-28014	Ø2.8	1M	360° (4Way)	640 x 480
CT5-28024	Ø2.8	2M	360° (4Way)	640 x 480
CT5-39024	Ø3.9	1.5M	360° (4Way)	1280x720(HD)
CT5-39034	Ø3.9	3M	360° (4Way)	1280x720(HD)
CT5-60024	Ø6.0	1.5M	360° (4Way)	1280x720(HD)
CT5-60034	Ø6.0	3M	360° (4Way)	1280x720(HD)
CT5-60054	Ø6.0	5M	360° (4Way)	1280x720(HD)
CT5-60064	Ø6.0	6M	360° (4Way)	1280x720(HD)
CT5-60074	Ø6.0	7M	360° (4Way)	1280x720(HD)
CT5-80104	Ø8.0	10M	360° (4Way)	1280x720(HD)

Ø1.8mm Ø2.2mm & Ø2.8mm are Interchangeable / Ø3.9mm & Ø6mm & Ø8mm are interchangeable

CT5-IR Series

Model	Tip Dia.	Length	Articulation	Camera Resolution	Light
CT5-60014IR	Ø6.0	1M	360° (4Way)	1280x720(HD)	IR
CT5-60024IR	Ø6.0	2M	360° (4Way)	1280x720(HD)	IR
CT5-60034IR	Ø6.0	3M	360° (4Way)	1280x720(HD)	IR
CT5-60014IRS	Ø6.0	1M	360° (4Way)	1280x720(HD)	IR & LED Switch
CT5-60024IRS	Ø6.0	2M	360° (4Way)	1280x720(HD)	IR & LED Switch
CT5-60034IRS	Ø6.0	3M	360° (4Way)	1280x720(HD)	IR & LED Switch

CT5-UV Series

Model	Tip Dia.	Length	Articulation	Camera Resolution	Light
CT5-60014UV	Ø6.0	1.5M	360° (4Way)	1280x720(HD)	UV & LED Switch
CT5-60024UV	Ø6.0	2M	360° (4Way)	1280x720(HD)	UV & LED Switch
CT5-60034UV	Ø6.0	3M	360° (4Way)	1280x720(HD)	UV & LED Switch



PHD7 Series

7" HD LCD Monitor

- 720p Camera and Big 7" Color LCD Screen.
- Built-in Transmitter for Locating Function.
- Universal Ball Mount and Kick Stand at The Back of Controller Can Set The Controller at The Best Viewing Angle and Flexible Operation.
- Hand-strips and Two Sets of Snapshot/ Recording Buttons Provide Better Grip for left-handed and Right-handed Users.
- Text Annotation Function to Enter Comments Through Real Keyboard (PS/2).
- Sun Screen Protection is Convenient for Outdoor Inspection.
- Powerful Li-ion Battery With Long Operation Time of 6 Hours.



Front view



Back view

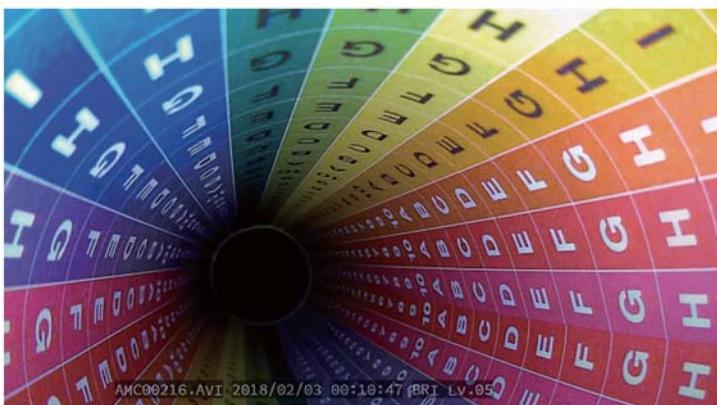
High Definition Video Inspection System

True 720P HD Camera for Crisp Clear Image

PHD7 is our newest innovation to use 720p HD camera in a video pipe inspection system. Not just a high definition display with scale up HD image, a true HD camera with crisp clear image provides professional users the best inspection facts for their maintenance jobs. Professionals can choose from 25mm, 28mm, or 33mm cameras based on the pipe sizes and their inspection needs. Locating function is integrated at the camera modules.

HD
1280 x 720

VGA
640 x 480





HD PIPE Inspection Probe

- Tip Dia. : $\varnothing 25\text{mm}$ / $\varnothing 28\text{mm}$ / $\varnothing 30\text{mm}$
- Resolution : 1280x 720 (HD)
- Length : 10M / 30M

HD



Specification

Host	
Tip Dia	$\varnothing 25\text{mm}$ / $\varnothing 28\text{mm}$ / $\varnothing 30\text{mm}$
Display	7" TFT LCD Monitor 16:9 (1024x600)
Image Resolution	1280x720
Video Resolution	1280x720
Data Port	AV Out / SD card / USB
Working Temperature	0°C~40°C
Language	Support Traditional Chinese, English ... and other languages
Battery Capacity	Build-in rechargeable Li-ion battery pack , 100~240V AC in/ 15V DC out
Dimension	260x160x70mm
Weight	1.3Kg

Model

Model	Tip Dia.	Length	Self-Leveling	Camera Resolution
PHD7-2510	$\varnothing 25$	10M	No	1280 x 720
PHD7-2530	$\varnothing 25$	30M	No	1280 x 720
PHD7-2810	$\varnothing 28$	10M	No	1280 x 720
PHD7-2830	$\varnothing 28$	30M	No	1280 x 720
PHD7-3010	$\varnothing 30$	10M	Yes	1280 x 720
PHD7-3030	$\varnothing 30$	30M	Yes	1280 x 720



CK Series

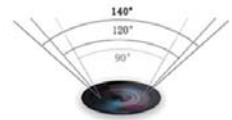
5" HD IPS LCD Monitor

- High-End Borescope Competitive with GE & Olympus
- Wear-resistant Tungsten Braided Probe
- 360° full swing articulation probe. Max 180° on each side.
- Camera Pixels 1,000,000
- Snapshot & Video Recording
- Super Bright 50000 Lux LED brightness adjustment
- Detachable Probe & Display



Handy Detachable Probe, Display, and Battery

360° full swing articulation probe



90°/120°/140° Broad vision



360°



Different Diameter of Probe for option



2 MM-6MM
 RICH PIPELINE CONFIGURATION

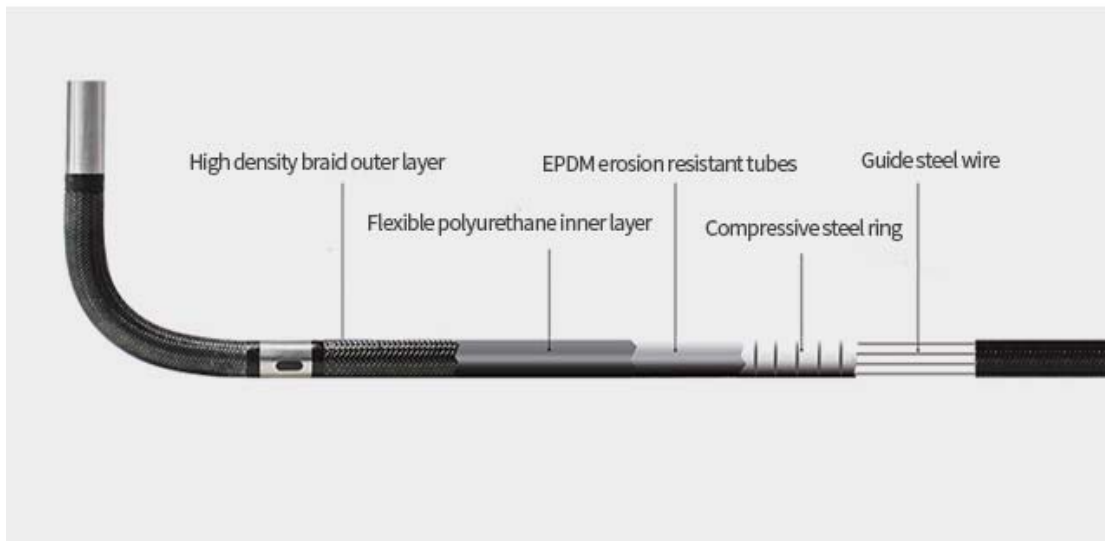


LENS COVER



STRAIGHT/
 SIDE VIEW LENS

Five layers of Tungsten-braided Probe



High Image Quality & Features



HD 1,000,000 PIXEL



High Brightness LED



Long Depth of Field



Highly True Colors



Overexposure Restrain



Specification

Host					
Probe Diameter	1.8mm	2.4mm	2.8mm	3.9mm	6.0mm
Display	5" ISP LCD Display (1024x768)				
Image Resolution	1280x720				
Video Resolution	1280x720				
Data Port	HDMI				
Articulation	360° Joystick-control Articulation				
Dual-view Camera	Non				Available for option (Light: Rear-mounted LED+Optic fiber)
Working Temperature	-10°C~80°C, low temperature without preheating (Can withstand 100°C for 30 minutes)				
Storage Temperature	-20°C~60°C				
Language	Chinese (simplified), French, English, German, Spanish, Italian, Japanese				
Battery Capacity	5V, 3400mAh (Detachable 18650 lithium-ion rechargeable type)				
Size	350x155x59mm				
Weight	1Kg				
Portable Case	ABS airtight shock-proof portable case, size: 46*40*19cm				

Model

Model	Tip Dia.	Length	Articulation	Camera Resolution
CK5-18002	Ø1.8	0.5M	2Way	160000
CK5-18012	Ø1.8	1M	2Way	160000
CK5-24014	Ø2.4	1M	360° (4Way)	160000
CK5-24024	Ø2.4	2M	360° (4Way)	160000
CK5-28014	Ø2.8	1M	360° (4Way)	160000
CK5-28024	Ø2.8	2M	360° (4Way)	160000
CK5-28034	Ø2.8	3M	360° (4Way)	160000
CK5-39014	Ø3.9	1M	360° (4Way)	1MP
CK5-39024	Ø3.9	2M	360° (4Way)	1MP
CK5-39034	Ø3.9	3M	360° (4Way)	1MP
CK5-39044	Ø3.9	4M	360° (4Way)	1MP
CK5-39054	Ø3.9	5M	360° (4Way)	1MP
CK5-60014	Ø6.0	1M	360° (4Way)	1MP
CK5-60024	Ø6.0	2M	360° (4Way)	1MP
CK5-60034	Ø6.0	3M	360° (4Way)	1MP
CK5-60044	Ø6.0	4M	360° (4Way)	1MP
CK5-60054	Ø6.0	5M	360° (4Way)	1MP
CK5-60064	Ø6.0	6M	360° (4Way)	1MP
CK5-60074	Ø6.0	7M	360° (4Way)	1MP
CK5-60084	Ø6.0	8M	360° (4Way)	1MP

(Interchangeable Display & Probe)

10.1"
Touch

10.1" LCD 3D MEAS USB HDMI

CF Series

3D Measurement Video Borescope

- High End Borescope Competitive with GE & Olympus
- 10.1" HD IPS LCD Monitor
- Wear-ristant Tungsten Braided Probe
- 360° Full Swing Articulation Probe. Max 190° Each Side.
- 720P HD Camera 1280 x 720 Resolution.
- Snapshot & Video Recording
- Super Bright 80000 Lux LED brightness adjustment
- Dispatchable Probe & Display



10.1" IPS Touch Panel
1920 x 1200 HD

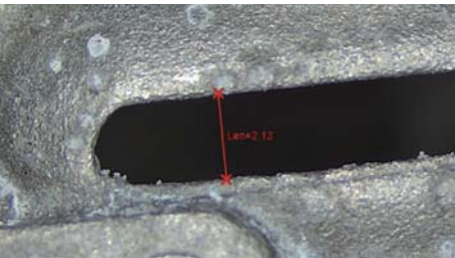


Intelligent Operation System

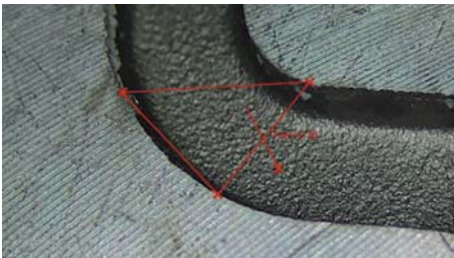
Image adjustment / Camera parameters setting
Image effects / Note text



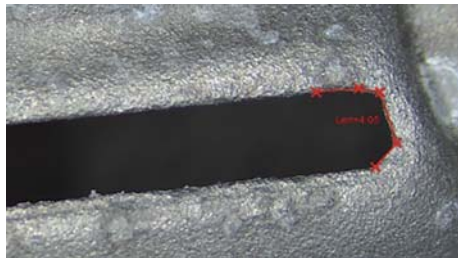
distance between two points



point -to -plane depth

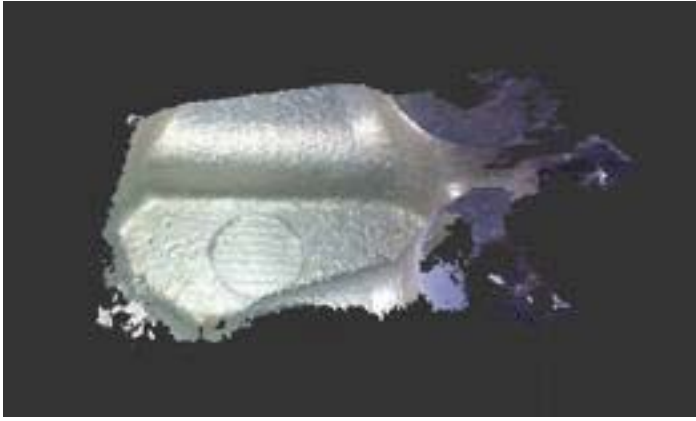


multiple point circumference

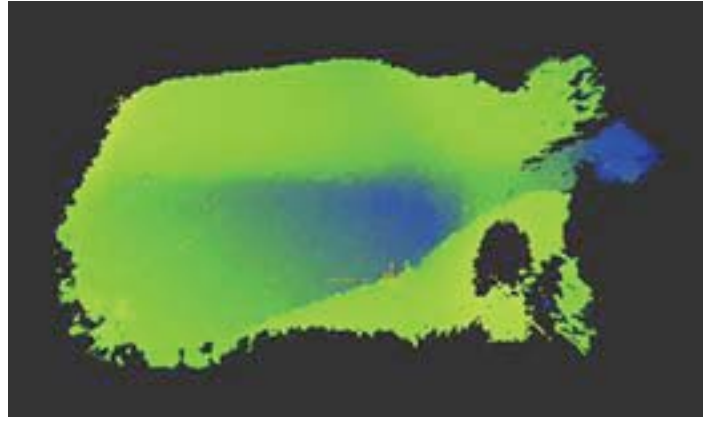


High Precision and Fast Global Scanning 3D Cloud Image

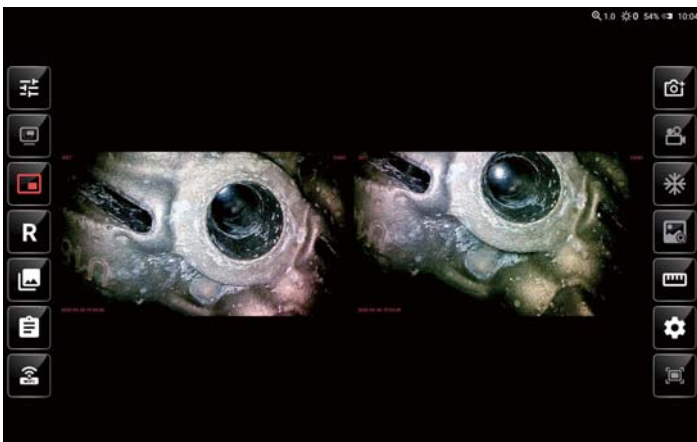
3D physical cloud image



Vertical depth nephogram



Smart Inspection



Picture in Picture



Tube System



360° articulation

maximum bending angle: 190°
Wear resistant tube
illuminance



Portable Design



Portable design

adjustable bracket

buckle to fix
monitor and handle

practical strap

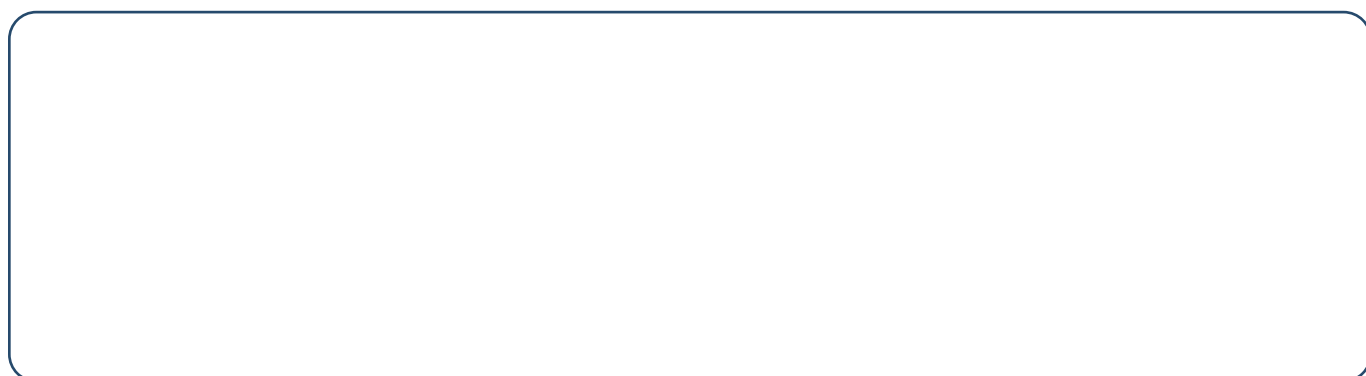
Host		
Probe Diameter	3.9mm	6.0mm
Display	10.1" HD IPS Touch panel (1920x1200)	
Image Resolution	640x480	1280x720
Video Resolution	640x480	1280x720
Data Port	Micro USB × 2 / mini HDMI × 1 SD slot × 1 / Air plug × 1	
Articulation	360° (4Way)	
Illuminance	1~9 levels adjustable light	
Working Temperature	Hostr -15°C~50°C / Camera -25 °C ~80 °C	
Storage Temperature	-23°C~63°C	
3D measurement	Point to point, point to surface, point to surface depth / multiple point circumference measurement, partial zoom window function (3 times calibration) measurement data list	
Battery Capacity	3000mA/3.7V × 4	
Portable Case	360×360×100mm	
Weight	2.65 ≤ kg (battery included)	

Model

Model	Tip Dia.	Length	Articulation	Camera Resolution
CF10-39014	Ø3.9	1.5M	360°(4Way)	300,000
CF10-39024	Ø3.9	2M	360°(4Way)	300,000
CF10-39034	Ø3.9	3M	360°(4Way)	300,000
CF10-60014	Ø6.0	1.5M	360°(4Way)	1MP
CF10-60024	Ø6.0	2M	360°(4Way)	1MP
CF10-60034	Ø6.0	3M	360°(4Way)	1MP

(90°side view for option)

Notes





POTOP

VIDEO BORESCOPE



OME-TOP SYSTEMS CO., LTD
TLE : 02-22880699 (Rep.) FAX : 02-22889191
E-MAIL : ome-top@ome-top.com
No.176-1, Zhongshan 2nd Rd., Luzhou Dist,
New Taipei City 247, Taiwan.